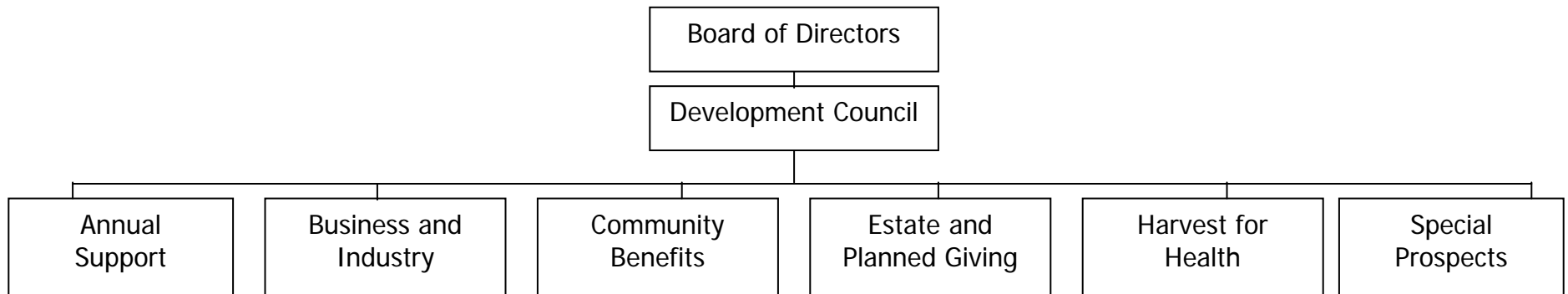


## ORGANIZATIONAL STRUCTURE



### **Annual Support Committee** (Julie Herring, Chair)

- ◆ Gemstone Society and associated recognition event(s)
- ◆ Funeral Directors program
- ◆ Employee support (i.e. Club or other involvement)
- ◆ Year-end appeal letter
- ◆ Provision of general information related to RMH / RMH Foundation

### **Business and Industry Committee** (Fred Wells, Chair)

- ◆ Identification and provision of programs on health / health care related topics of interest/concern to local businesses
- ◆ Provision of general information related to RMH / RMH Foundation

### **Community Benefits** (Judy McKinney & Bev Keyth)

- ◆ Development of and assistance with health / health care related Speaker's Bureau
- ◆ Suggestions for topics/programs of concern to area residents
- ◆ Provision of general information related to RMH / RMH Foundation

### **Estate & Planned Giving Committee** (Rob David, Chair)

- ◆ Provision of estate and planned giving programs for general public quarterly
- ◆ Provision of estate and planned giving program for legal/financial planning community annually
- ◆ Provision of general information related to RMH / RMH Foundation

### **Harvest for Health Committee** (Paul Wirth, Chair)

- ◆ Solicitation of health / health care related topics of interest and concern to agriculture community
- ◆ Provision of programs to address identified topics
- ◆ Provision of general information related to RMH / RMH Foundation

### **Special Prospects Committee** (Mike David, Chair)

- ◆ Identify and cultivate individuals capable of giving significant gifts
- ◆ Provision of general information related to RMH / RMH Foundation